



# WASIP

TRUSTED NAME IN PERSONAL PROTECTIVE EQUIPMENT



## EYE & FACE PROTECTION

Contact your local distributor.

# SAFETY GLASSES

## TRINITY

Part #	Lens Colour	Package
W121300	Clear	12/Box 144/Case
W121302	Grey	

- Adjustable ratchet temples
- Extremely lightweight
- Temples come with soft comfort pads
- Polycarbonate scratch resistant lens with molded nose bridge
- Lens base curve 10 mm
- Lens offers 99% protection from harmful ultra violet radiation
- High impact protection
- Meets CAN/CSA Z94.3/ANSI Z87.1



## GROOVE

Part #	Lens Colour	Package
W131100	Clear	12/Box 144/Case
W131102	Grey	
W131106	Indoor/Outdoor	
W131108	Silver Mirror	

- Lightweight wraparound frame
- Ratchet temples
- Advance nose pad with ridge design for increased comfort and personal adjustment
- Soft padded temples for secure fit
- Scratch resistant single polycarbonate lens
- Lens base curve 8 mm
- Lens offers 99% protection from harmful ultra violet radiation
- Meets CAN/CSA Z94.3/ANSI Z87.1

## VIBE

Part #	Lens Colour	Package
W130302	Grey	12/Box 144/Case
W130306	Silver Mirror	

- Lightweight wraparound frame
- Adjustable ratchet temples
- Soft nose pad increase comfort
- High impact scratch resistant dual polycarbonate lens
- Lens base curve 8 mm
- Lens offers 99% protection from harmful ultra violet radiation
- Meets CAN/CSA Z94.3/ANSI Z87.1



## TWISTER

Part #	Lens Colour	Package
W20800	Clear	12/Box 144/Case
W20802	Grey	
W20804	Amber	
W20807	Blue	
W20808	Indoor/Outdoor	
W208051	Medium Green	
W208052	Dark Green	

- Low profile lightweight design
- Universal nose bridge
- Scratch resistant poly carbonate lens
- Lens base curve 9 mm
- Lens offers 99% protection from harmful ultra violet radiation
- High impact protection
- Meets CAN/CSA Z94.3/ANSI Z87.1



## THE TEMP

Part #	Lens Colour	Package
W1080	Clear	12/Box 144/Case
W10850	IR Shade 5.0	

- Molded brow guard, nose bridge with vented side shields
- Lightweight frame
- High impact polycarbonate lens and temples
- Lens base curve 4 mm
- Lens offers 99% protection from harmful ultra violet radiation
- Meets CAN/CSA Z94.3/ANSI Z87.1



## TEMP LITE

Part #	Lens Colour	Package
W1090	Clear	12/Box 300/Case
W1092	Grey	

- Molded wrap-around lens
- Extremely lightweight
- High impact scratch resistant polycarbonate lens and temples
- Polycarbonate lens and temples
- Lens base curve 9 mm
- Lens offers 99% protection from harmful ultra violet radiation
- Meets CAN/CSA Z94.3/ANSI Z87.1







W500400



W500407



W504500



W504502



W504508

## VORTEX BLUE/SILVER FRAME

Part #	Lens Colour	Package
W500400	Clear	12/Box 144/Case
W500407	Blue Mirror	

## BLACK/SILVER FRAME

Part #	Lens Colour	Package
W504500	Clear	12/Box 144/Case
W504502	Grey	
W504508	Indoor/Outdoor	

- Wrap around sports style design
- Adjustable ratchet temple
- Soft grip temple
- Integral molded nosepiece, brow guard and side shield
- Scratch resistant polycarbonate lens
- Lens base curve 8.75 mm
- Lens offers 99% protection from harmful ultra violet radiation
- High impact lens
- Meets CAN/CSA Z94.3/ANSI Z87.1

## SCORPION

Part #	Description	Package
W90110	Black frame, Clear lens	12/Box 144/Case
W901130	Black frame, IR Shade 3.0	
W901150	Black frame, IR Shade 5.0	

- Polycarbonate scratch resistant lens includes molded side shield
- Nylon frame with adjustable temple and molded brow guard for increased protection
- Traditional design fits a wide variety of faces
- Lens base curve 4 mm
- Lens offers 99% protection from harmful ultra violet radiation
- High impact protection
- Meets CAN/CSA Z94.3/ANSI Z87.1



W90110



W901150

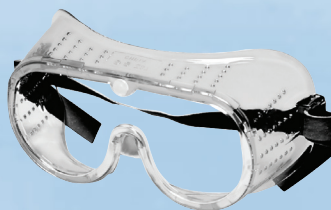


W901130

## SAFETY GOGGLES

Part #	Description	Package
150000	Clear Perforated Frame	36/Box 144/Case
150010	Chemical Splash Vent	
150020	Anti-Fog Perforated Frame	
150030	Anti-Fog Chemical Splash Vent	
150070	Clear Anti-Fog Ventless Frame	

- Generous sizing and protection
- Can be worn over prescription glasses
- Adjustable elastic strap for a secure and comfortable fit
- Regular and anti-fog lens coatings
- Available in perforated, chemical splash vent and ventless frame styles
- Meets CAN/CSA Z94.3/ANSI Z87.1



150000



150010



150070

## ACCESSORIES

### KLIP-ON LENS

Part #	Lens Colour
140012	Grey
140300	IR Shade 3.0
140500	IR Shade 5.0

- Designed to fit over most protective eyewear frames
- Durable
- Easy to use
- Clip on design
- Provides temporary protection against ultra violet radiation
- IR shades available for use in a welding environment or exposure to infrared light



### EYEGLOSS CORDS

Part #	Description	Package
460040	Eyeglass Cord, Black	12/Bag
460080	Deluxe Eyeglass Cord, Black	
460090	Deluxe Eyeglass Cord, Blue	

- Comfortable strap keeps glasses safe and secure
- Fits all glasses/sunglasses with an adjustable lanyard loop end
- Quickly attaches to eyeglasses
- Convenient and easy to use
- Durable



460080



460040



460160



460150

### SIDE SHIELDS

Part #	Package
130010	50 Pairs/Bag

- Provides protection from all angles
- Designed to fit all types of eyewear
- Quickly attaches to eyeglasses
- No tools or extra parts required
- Clear, flexible design
- Convenient and easy to use
- Lightweight
- Side protection against light hazards such as dust, chemical splash and other eye irritants

### EYEGLOSS CASES

Part #	Description
460150	Eyeglass Bag, Universal Pouch with Drawstring
460160	Eyeglass Case, Nylon with Belt Loop

- Compact and lightweight
- Durable
- Protects glasses from scuffs and scratches
- Nylon case with belt loop



244041



310800



244065

## HEADGEAR AND BRACKETS

Part #	Description
244065	Headgear
244041	Headgear, Clear Visor & Chin Protector Combo
310800	Aluminum Bracket
310810	Dielectric Bracket

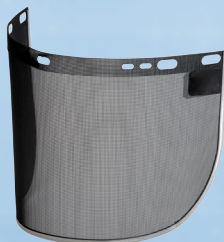
- Window can be raised and held at any position
- Pivoting guard allows visor to lift up when not in use
- Brackets designed to attach to hard hats with universal locking cams to secure visor
- Easy window attachment and removal



243960



2439230



244410

## FACESHIELDS

### FORMED FACESHIELDS

Part #	Description	Size
243830	Clear Polypropionate	6 x 15.5 x .060"
243960	Clear Polycarbonate	8 x 15.5 x .060"
2439230	Shade 3.0 Polycarbonate	8 x 15.5 x .080"
2439250	Shade 5.0 Polycarbonate	8 x 15.5 x .080"
244410	Metal Mesh	8 x 15.5 x .060"

### FLAT FACESHIELDS

243700	Clear PCTG	8 x 15.5 x .040"
243710	Clear PCTG	10 x 15.5 x .040"
243720	Medium Green PCTG	8 x 15.5 x .040"
243750	Clear PCTG	9 x 18.25 x .040"
243990	Clear Polycarbonate	8 x 15.5 x .040"
244000	Clear Polycarbonate	8 x 15.5 x .060"

- Molded from high strength polypropionate, polycarbonate or PCTG
- Provides frontal and lateral protection
- Easy to attach to headgear and bracket



# WELDING EQUIPMENT



## WELDING HELMET

Part #	Description
231950	Welding Helmet, 1/Bag

## REPLACEMENT PARTS FOR WELDING HELMET

Part #	Description
232010	Ratchet Headgear
232050	Lens Spring, 2 x 4"

- Strong, lightweight and flexible
- Designed for comfort
- Heat and moisture resistant
- One piece seamless construction
- Comes with Shade 11 filter
- Ratchet headgear assures quick adjustment
- Meets CAN/CSA Z94.3/ANSI Z87.1



## POLYCARBONATE FILTER LENSES

Part #	Description	Size
220920	Shade 5	2 x 4.25"
220940	Shade 9	2 x 4.25"
220950	Shade 10	2 x 4.25"
220960	Shade 11	2 x 4.25"

## POLYCARBONATE COVER LENSES

Part #	Description	Size
22050E	Clear Lens	2 x 4.25"
22057PE	Clear Lens	4.5 x 5.25"



## WELDING SAFETY GLASSES

Part #	Description	Style
W10850	IR Shade 5.0	Temp
W901130	IR Shade 3.0	Scorpion
W901150	IR Shade 5.0	Scorpion

- Designed to deliver desired strength, flexibility, and safety with the minimum weight possible
- High impact protection
- Polycarbonate scratch resistant lens include side shields
- Traditional design fits a wide variety of faces
- Lens offers 99% protection from harmful ultra violet radiation
- Meets CAN/CSA Z94.3/ANSI Z87.1



## WELDING GOGGLES

Part #	Description
210770	50 mm Welders cup goggle with IR shade 5.0 lens
210710	2 x 4.25" Lift front goggle with IR shade 5.0 lens
210700	2 x 4.25" Fixed front goggle with IR shade 5.0 lens

- Designed to deliver desired strength, flexibility, and safety with the minimum weight possible
- Vents to minimize fogging and perspiration
- Generous sizing for all day comfort
- Made to withstand the rigors of heavy workshop

# LENS CLEANING PRODUCTS



## LENS CLEANING SOLUTION

Part #	Description
200040	125ml Solution with Sprayer
200136	250ml Solution with Sprayer
20003P	500ml Boston round Solution with Sprayer
200080	500ml Cylindrical Solution with Sprayer
200020	4L Solution
200090	Spray Pump for 200136
200050	Spray Pump for 20003P

- Anti-fog/anti-static solution leaves no residue after proper application
- Suitable for glass or plastic
- Quality solution for cleaning glasses, goggles, face shields and electronic devices



## LENS CLEANING TOWELETTES

Part # 200200

- Sturdy corrugated cardboard design with pull out bottom for easy dispensing
- Premoistened individually wrapped towelettes
- Compact, pocket size solution
- Anti-fog/anti-static solution leaves no residue after proper application
- Suitable for glass or plastic
- Quality solution for cleaning glasses, goggles, face shields and electronic devices



## LENS CLEANING TISSUES

Part # 200190

- Soft, lint-free, highly absorbent tissue

## LENS CLEANING STATIONS

- Soft, lint-free, highly absorbent tissue
- Wall mountable for easy access
- Anti-fog/anti-static solution leaves no residue after proper application
- Suitable for glass or plastic
- Quality solution for cleaning glasses, goggles, face shields and electronic devices



Custom imprinting of company name and logo available.

## METAL LENS CLEANING STATION

Part # 200010

- Heavy duty metal dispenser withstands harsh conditions over extended periods of use
- Wall mountable for easy access
- Station comes complete with (2) 500ml lens cleaner and 1 box of tissue
- Lock and key included



200000



200500

## DISPOSABLE LENS CLEANING STATION

Part #	Description
200000	Disposable Station with (1) 250ml lens cleaner and 2 boxes of tissues
200500	Disposable Station with (1) 500ml lens cleaner and 4 boxes of tissues

- Heavy-duty corrugate construction withstands harsh conditions over extended periods of use
- Compact size and high tissue count makes it perfect for high traffic areas
- No maintenance required



**WASIP**  
LTD.

3771 Victoria Park Ave.  
Toronto ON, M1W 3Z5



(416) 297 5020  
1 (800) 268 3572



(416) 297 0109  
1 (800) 263 9049



wasip.com  
sales@wasip.com